

INSTALLATION MANUAL

13568

Level of Difficulty

Easy

Installation difficulty levels are based on time and effort involved and may vary depending on the installer level of expertise, condition of the vehicle and proper tools and equipment.

Weight Carrying Capacity

Gross trailer weight (GTW)	5,000 lbs.
Tongue weight (TW)	500 lbs.

Weight Distribution Capacity

Weight distribution (WD)	5,000 lbs.
WD tongue weight (WDTW)	500 lbs.

Parts List

Item	Qty	Description
1	2	Carriage bolt, 7/16"-14 x 1-3/4", grade 8
2	2	Hex bolt, M6-40 x 1", CL10.9
3	2	Hex bolt, M14-35 x 1-1/2", CL10.9
4	2	Square-hole spacer, 1/4" x 7/8" x 2-1/4"
5	2	Tube spacer
6	2	Conical-toothed washer, 9/16"
7	2	Flat washer, 9/16"
8	2	Flat washer, 1/4"
9	2	Lock washer, 1/4"
10	2	Nylock nut, 7/16"-14
11	2	Serrated-flange nut, 7/16"-14
12	2	Fishwire

Tools Required

Die grinder with carbide burr	Ratchet
Socket, 10mm	Socket extension
Socket, 22mm	Torque wrench
Socket, 11/16"	Small screwdriver
Socket, 5/8"	Pliers

* For a tools reference guide visit curtmfg.com/trailer-hitch-installation

! WARNING

Never exceed the vehicle manufacturer's recommended towing capacity.

Product Photo



NOTICE

Visit www.curtmfg.com for a full-color copy of this instruction manual, as well as helpful videos, guides and much more!

Before you begin installation, read all instructions thoroughly.

Proper tools will improve the quality of installation and reduce the time required.

This installation requires:

- Temporary removal of the bumper fascia support
- Removal of the hitch panel

Take care when cutting plastic or metal as injury may occur if done improperly.

Periodic inspection of the trailer hitch should be performed to ensure all mounting hardware remains tight and structural components are secure.

To help prevent damage to the product or vehicle, refer to the specified torque specifications when securing hardware during the installation process.

SAFETY INSTRUCTIONS

Safety glasses should be worn at all times while installing this product.

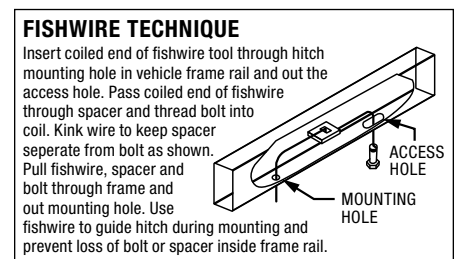
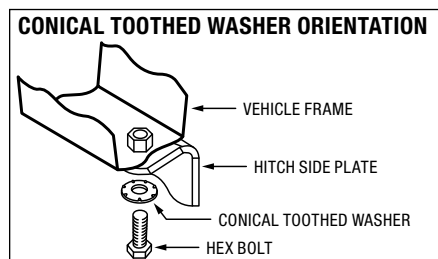
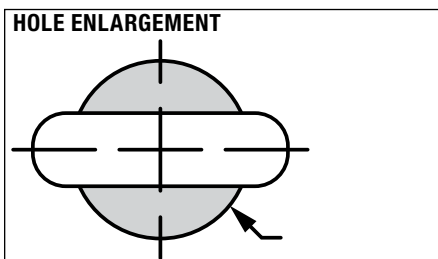
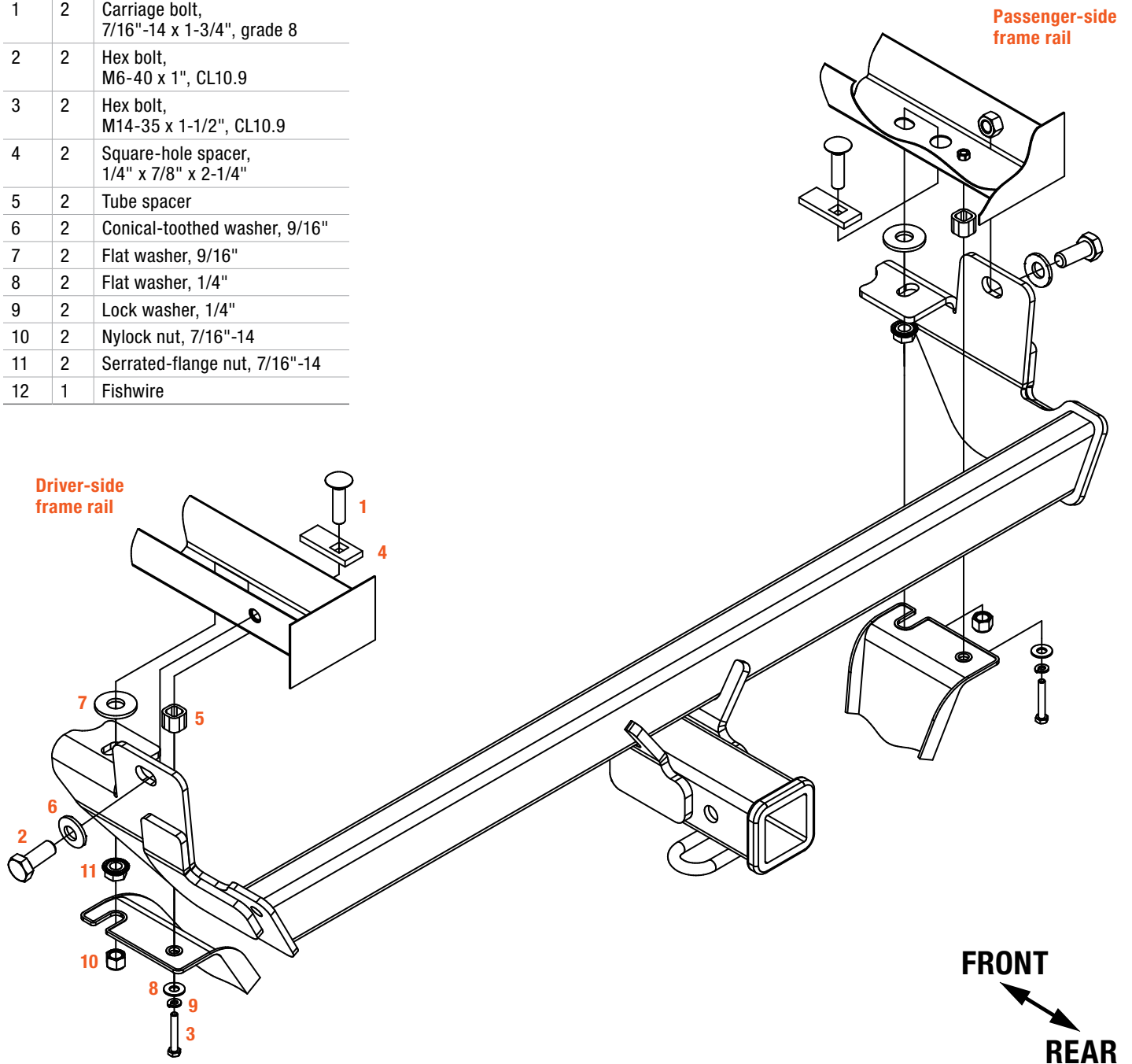
Product Registration and Warranty

CURT stands behind our products with industry-leading warranties. To get copies of the product warranties, register your purchase or provide feedback, visit: warranty.curtgroup.com/surveys

ASSEMBLY

Parts List

Item	Qty	Description
1	2	Carriage bolt, 7/16"-14 x 1-3/4", grade 8
2	2	Hex bolt, M6-40 x 1", CL10.9
3	2	Hex bolt, M14-35 x 1-1/2", CL10.9
4	2	Square-hole spacer, 1/4" x 7/8" x 2-1/4"
5	2	Tube spacer
6	2	Conical-toothed washer, 9/16"
7	2	Flat washer, 9/16"
8	2	Flat washer, 1/4"
9	2	Lock washer, 1/4"
10	2	Nylock nut, 7/16"-14
11	2	Serrated-flange nut, 7/16"-14
12	1	Fishwire

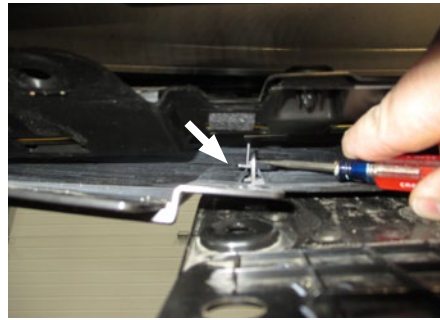
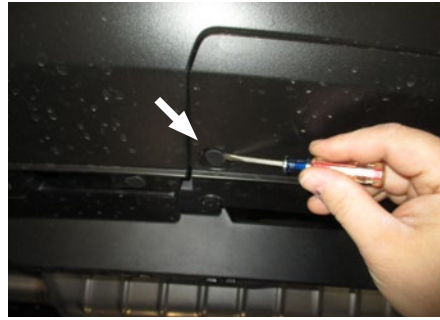
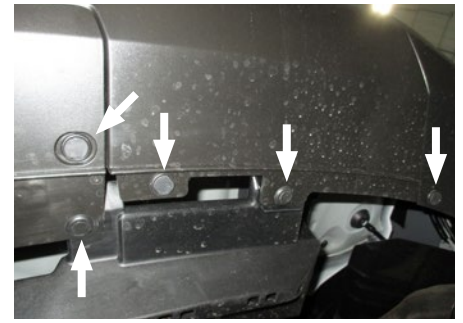


Step 1

Remove the 10 push pin fasteners with a straight screwdriver, holding the bumper fascia to the bumper fascia support and the 'hitch door' to both.

Remove the two clips with a straight screwdriver fastening the rearward edge of the hitch door.

Return the hitch door, clips and four push pins to the vehicle owner.



Step 2

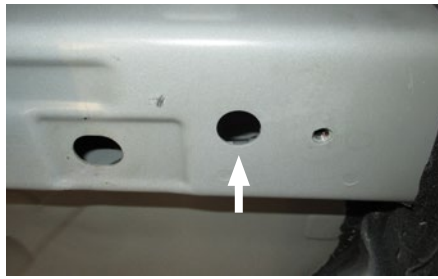
Remove the two screws securing the bumper fascia support to the frame rails with a 10mm socket. Using pliers, twist the two plastic plug clips while pulling downward to remove.

Remove bumper fascia support and set aside for later re-installation, clips and screws can be returned to vehicle owner.



Step 3

Using a die grinder with a carbide burr, enlarge the round hole in the bottom of the frame rails between the weld nut and plug clip slot to allow for the 7/16" carriage bolt and square hole spacer to pass through.



Step 4

Using the supplied fishwire (#12), fishwire the carriage bolts (#1) and square-hole spacers (#4) into the slotted holes in the bottom of the frame rails, one per side.

Leave the fishwire attached so as not to push the bolts into the frame rail while raising the hitch into position. Remove the adhesive patch on the outer sides of the frame rail to gain access to the 14mm weldnuts.



Step 5

Thread the fishwire through the supplied 9/16" washers (#7) and into the forward holes in the hitch. Gently raise the hitch into position with the main body tube resting on the bumper fascia area.

Take care not to damage any electrical components, wiring or the bumper cover.



Step 6

Remove the fishwires and loosely secure the hitch with supplied 7/16" flange nuts (#11) and the large M14 hex bolts (#3) with 9/16" conical tooth washers (#6).



Step 7

Torque all 7/16" fasteners to 59 lb-ft and all M14 fasteners to 136 lb-ft.



Step 8

Raise the bumper fascia support back into position with the supplied tube spacers (#5) aligned with the small weldnuts, between the support and the frame rail.

Loosely install the supplied M6 hex bolts (#2), 1/4" lock washers (#9), and 1/4" flat washers (#8) as shown in the diagram on page 2.

The forward slot will align with the 7/16" bolts and nylock nuts (#10) will then be installed, pinching the support between the nuts.

IMPORTANT: Hand tighten in this step only.



Step 9

Reinstall the six push pins attaching the bumper fascia to the bumper fascia support.



Final Installed Image



TOWING BASICS & SAFETY INFORMATION

For information on safely towing your trailer, visit curtmfg.com/understanding-towing.